



Solutions for demanding environments

simon





Solutions for demanding environments

There are quiet spaces and busy spaces. Closed ones and open ones. Sunny days and stormy days. Each setting has its own demands, but they all have something in common: they benefit from the solutions Simon has created for each one.

With Simon's solutions for demanding environments, your mechanisms will be protected against water, dust, scratches and knocks.





DEMANDING ENVIRONMENTS

When installation needs to be made in a special place and presents a similar challenge



intensive use impacts
tampering
vandalism



water
dust
scratching



cleaning
abrasive
liquids



interference
mishaps



DEMANDING SOLUTIONS

Simon has the solution
for walls and floors in indoor and outdoor settings
requiring demanding installations and products.

Scudo | **27** Cima | **500** Metal housings

Waterproof box | **K45**

Aqua | **44** Trunking



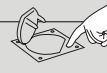
SOLUTIONS



Scudo|27



Cima|500
Metal housings



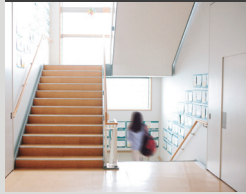
K45
Waterproof box



Aqua|44



Metal trunking



Educational establishments: classrooms and schools



Precinct entrances, corridors, auditoriums, classrooms, common areas, play areas and toilets

Meeting rooms, multi-purpose rooms, computer labs, labs, multi-function equipment and vending machines

Outdoor areas, multi-purpose rooms and assembly rooms

Outdoor areas, kitchens/dining rooms, play areas and changing rooms

Meeting rooms, multi-purpose rooms, computer labs, common areas, labs, multi-function equipment and vending machines



Hospitals and health centres



Busy areas with the need for use control and the risk of tampering or impacts: corridors, waiting rooms, emergency areas and toilets

Waiting rooms, operating theatres, doctors' surgeries, boxes, operating theatres, meeting rooms, multi-function equipment, vending machines and vehicle circulation areas

Transit areas, operating theatres and outdoor areas

Outdoor areas, labs and rooms where water/liquids are handled

Waiting rooms, doctors' surgeries, boxes, operating theatres, meeting rooms, multi-function equipment, vending machines and vehicle circulation areas



Terminals: airports, buses, etc.



Waiting rooms, corridors, warehouses, shops and stores, toilets and wherever control over the use of functions is needed

Boarding gates, waiting rooms, vending machines and indoor cargo areas

Transit areas, conversion of transit areas into temporary shops and outdoor areas

Outdoor areas, warehouses, hangars and parking areas

Boarding gates, waiting rooms, vending machines and indoor cargo areas



Sports centres, gymnasiums, etc.



Entrances to premises, transit areas, stores, vending machines, machine rooms and sports halls

Reception, sports halls, vending machines and stores

Fitness rooms and outdoor areas

Outdoor areas, changing rooms, toilets and swimming pool areas

Sports movement and equipment areas (weights, sports halls), reception, vending machines and stores



Retail stores and shopping centres



Corridors, shops, store areas, changing rooms, store entrances and shop windows

Shop windows, counters and stores areas

Transit areas in sales spaces, conversion of transit areas into temporary shops and outdoor areas

Terraces, car parks, outdoor areas, maintenance areas and fresh product points of sale

Shop windows, counters, stores areas, facilities for moving heavy loads: dealers, etc.



Offices and bureaus



Public areas, transit areas and visiting areas

Work stations, meeting rooms, multi-function equipment and vending machines

Patios, terraces and outdoor areas

Work stations, meeting rooms, multi-function equipment and vending machines

Cleaning, liquids, abrasions

Water, dust, scratching

Intensive use, impacts, tampering, vandalism

Interference, mishaps

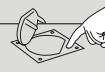
SOLUTIONS



Scudo|27



Cima|500
Metal housings



K45
Waterproof box



Aqua|44



Metal trunking



Laboratories



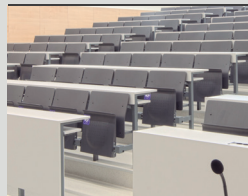
Transit areas, points where equipment is protected against tampering and material storage areas

Work stations, meeting rooms, rehearsal rooms, multi-function equipment and vending machines

Transit areas and outdoor areas

Rehearsal rooms, machine or equipment rooms, damp areas and rooms where water/liquids are handled

Work stations, meeting rooms and rehearsal rooms



Convention centres and conference rooms



Corridors, transit areas, conference rooms and toilets

Work stations, meeting rooms, multi-function equipment and vending machines

Transit areas and outdoor areas

Toilets, outdoor areas: gardens and terraces

Work stations, meeting rooms, multi-function equipment, vending machines, transit areas and auditoriums



Museums and Libraries



Busy areas: exhibition rooms, corridors, busy rooms and toilets

Reception, lecture rooms, transit areas, multi-function equipment and vending machines

Transit areas and outdoor areas

Toilets, outdoor areas: terraces and gardens.

Reception, lecture rooms and transit areas



Hotels



Hall, reception, merchandise areas and fitness rooms

Reception, common areas, halls and loading/unloading bays

Outdoor areas, terraces, leisure facilities and swimming pools open to the public

Outdoor areas, kitchens, stores, swimming pools and terraces

Reception, common areas, halls, loading/unloading bays, transit areas and auditoriums



Communities of neighbours



Outdoor entrances, stairs or busy indoor common areas

Outdoor areas, terraces and swimming pools

Communal car parking, fire escapes, communal terraces and maintenance areas

Common areas, lifts, indoor patios: vertical and horizontal layout of electrical and/or communications wiring



Homes



Outdoor entrances

Private and/or communal car parking

Outdoor areas, terraces and swimming pools

Garages, terraces, emergency staircases, gardens and swimming pools

Wiring layout to other rooms

Cleaning, liquids, abrasions

Water, dust, scratching

Intensive use, impacts, tampering, vandalism

Interference, mishaps



SOLUTIONS FOR PUBLIC AREAS

Scudo|27 Cima|500



Protection and security
against impacts, vandalism
and unwanted tampering

The Simon 27 Scudo and 500 Cima collection provide specific, heavy duty solutions, designed for such busy public places, which therefore have greater exposure to possible damage

Scudo|27

Protect and reinforce with
Simon 27 mechanisms

FRAME THAT CAN ONLY
BE REMOVED WITH
A SPECIFIC TOOL



Frames for protection and security
against impacts, vandalism and
unwanted tampering in busy areas

MAXIMUM PROTECTION,
KEY ACCESS RESTRICTION



The key cover allows you control access
and prevent undue use of the mechanism.
A specific solution for busy areas. Stop
worrying about these mechanisms.



Protecting
Simon 27 functions

Simon 27 Scudo was created to protect
Simon 27 mechanisms. You can access
a large number of functions as all the
mechanisms can be adapted.

COMPATIBLE WITH
ANY 27 MECHANISM

HIGH IMPACT
RESISTANCE

IK07



White - Emery Grey - Chrome

IK09



Aluminium



TOP
IMPACT

IP40 to IP44



Increase IP40
protection to IP44 by
using an IP44 seal



Applications:

- Offices
- Retail
- Museums
- Hospitals
- Terminals (Airports, buses, etc.)
- Sports centres
- Schools
- Terraces
- Communities of neighbours
- Outdoor entrances to homes and businesses





Cima|500

METAL HOUSINGS

IK10

Designed for offices and public areas

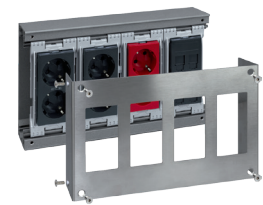
OPTIMAL RADIUS OF CURVATURE

Its 57 mm of depth respects the radius of curvature for voice and data cables of Cat. 6 and above.



FRAME WITH SECURE FIXING

Using 8 stainless steel Allen screws

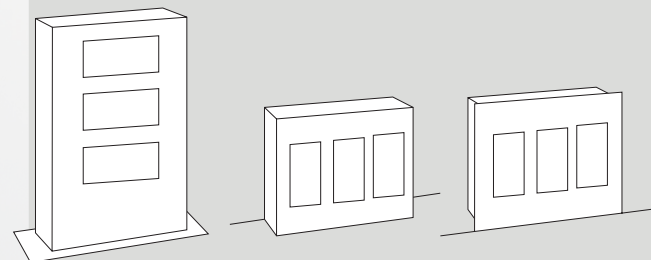


TUBE OR TRUNKING INLET

Option of making customised tube or trunking entries according to installation needs.

Appearance, versatility and strength

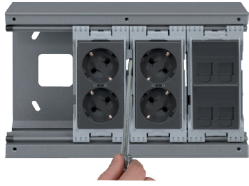
Simon's metal housings, with their flat lines and modern design, give spaces the decorative and functional versatility they need and protect against knocks, impacts, scratches, etc.



Mini-tower

Surface-mounted

Recessed



INDEPENDENT ELECTRICAL AND VDM CIRCUITS

Independent blocks for electricity and VDM to simplify installation and maintenance. Compatible with K45 and Simon 27 solutions (using an adapter) to offer maximum versatility in electronic products and multimedia connections.



PROTECTIVE COVER WITH KEY

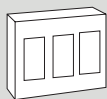
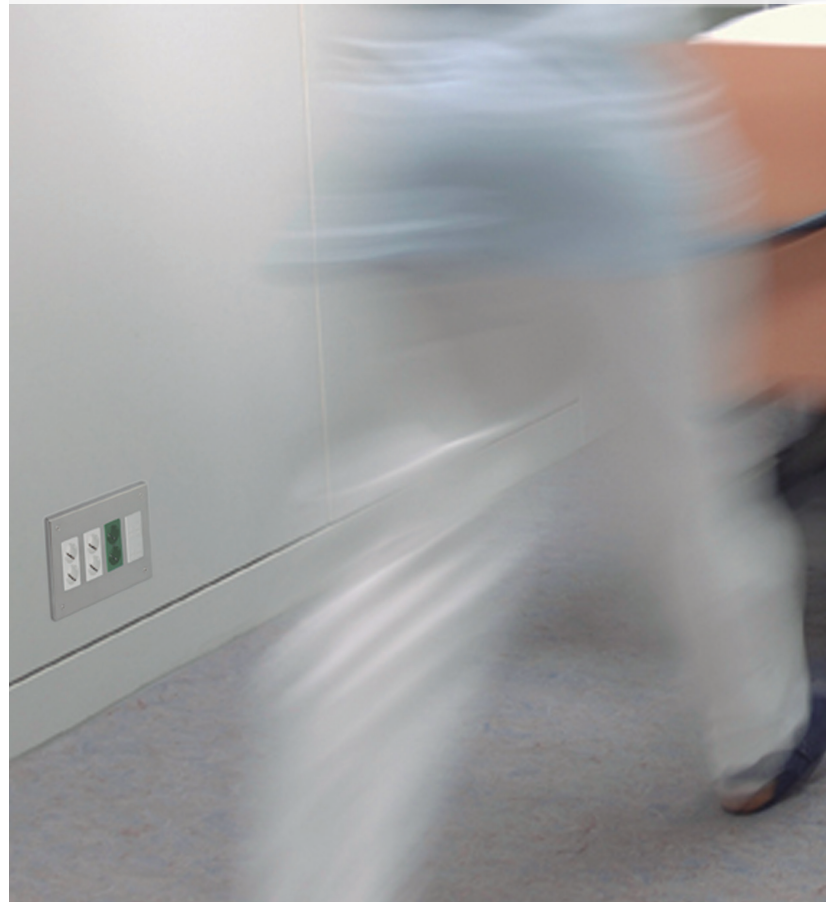
The low profile stainless steel cover protects and restricts access to the connections in public places such as stations, hospitals and airports to prevent machinery from being disconnected.

Clean, hygienic stainless steel

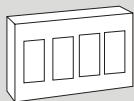
Compact surface to avoid the presence of dirt and bacteria. The corrosion resistant cover ensures durability in:

- Hospital centres
- Operating theatres
- Nurseries
- Shopping areas

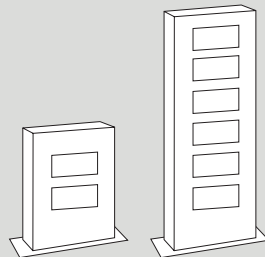
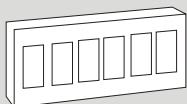
And other busy public areas



SURFACE-MOUNTED AND RECESSED BOXES



Available in 1, 2, 3, 4 and 6 modules.



1 OR 2 SIDED MINI-TOWERS

Available in 2, 3, 4 and 5 modules.

SOLUTIONS

FOR BUSY OUTDOOR
AND INDOOR AREAS

Waterproof box | K45

Protection and complete insulation from
knocks and liquids for isolated connections

MINIMALIST AESTHETICS
IN 2 FINISHES:
STAINLESS STEEL AND BRASS

The K45 Waterproof box solution is
designed to protect functions in open-
plan areas busy with people or exposed
to the inclemency of the weather.

- Busy outdoor public places
- Shopping centres
- Car dealers
- Convention centres
- Hotels
- Health centres
- Sports centres
- Museums
- Airports
- Homes
- Gardens

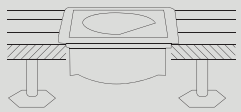
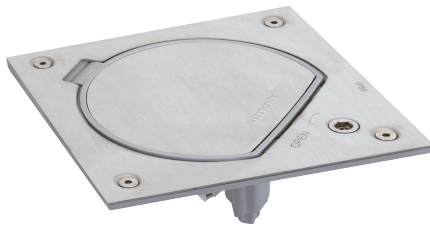


ELECTRICITY, VOICE,
DATA & MULTIMEDIA
IN ONE BOX

IP66 IK08

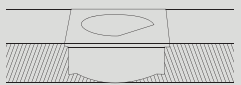
Closed, with IP66 protection rating,
keeping solutions fully isolated from
water and dust.

Withstands water jets of
1 kg/cm² in any direction



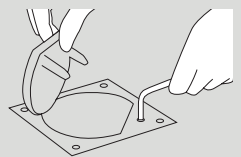
FALSE FLOORING

For installation in garden and terrace
floors, wooden or parquet platforms
or raised floors.



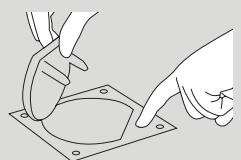
CONCRETE FLOOR

Allows flush box installation in
all types of flooring: stoneware,
terrazzo, ceramics, etc.



SECURITY LOCK

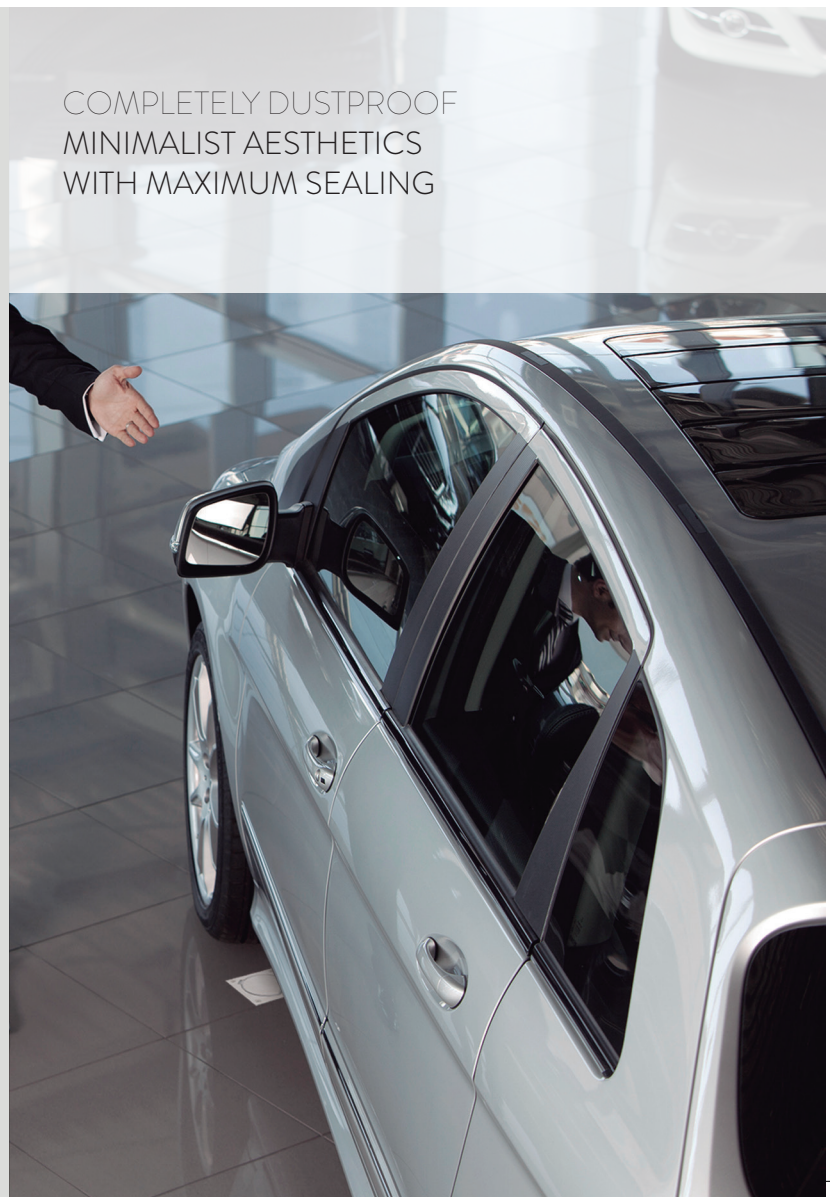
Ideal for preventing
unwanted tampering



MANUAL LOCKING

Manual locking suitable for
less demanding settings

COMPLETELY DUSTPROOF
MINIMALIST AESTHETICS
WITH MAXIMUM SEALING





SOLUTIONS

FOR AREAS WITH WATER & DUST
AND OUTDOORS



Aqua|44



IP55

Protection for Simon 27 mechanisms exposed to the inclemencies of the weather; protecting them from environmental conditions, against water, dust and dirt

- Terraces • Kitchens • Garages • Lumber rooms
- Gardens • Toilets • Warehouses • Laboratories
- Maintenance areas • Outdoors

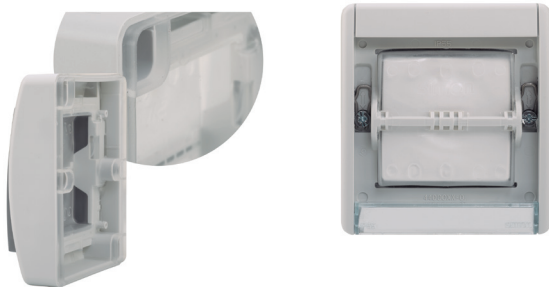


MAXIMUM PROTECTION
for Simon 27 mechanisms

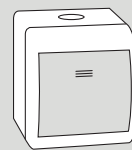
FOUR COLOURS



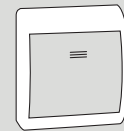
MAXIMUM SEALING SECURITY
Pre-injected watertight seal



TWO SOLUTIONS



Surface-mounted



Recessed

FUNCTIONS



Switch



Dual switch



Socket base



Switch with key



Courtesy beacon



SOLUTIONS

FOR WIRING DISTRIBUTION AND JUNCTIONS



Trunking



For wiring transport and distribution

An elegant solution for installing, distributing and joining wiring in places where recessing is not possible. Giving a clean and orderly appearance after installation.

- Offices
- Bureaus
- Museums
- Classrooms
- Hotels
- Libraries
- Training rooms
- Conference rooms
- Homes

ADAPTATION OF SIMON MECHANISMS

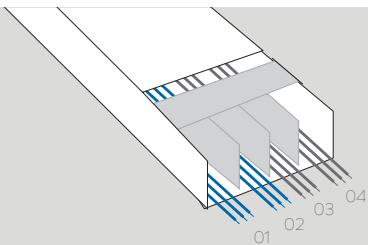
Compatible with Simon solutions, especially designed to integrate into indoor space decorations.

IK07

ROBUSTNESS AND OPTIMISED INSTALLATION

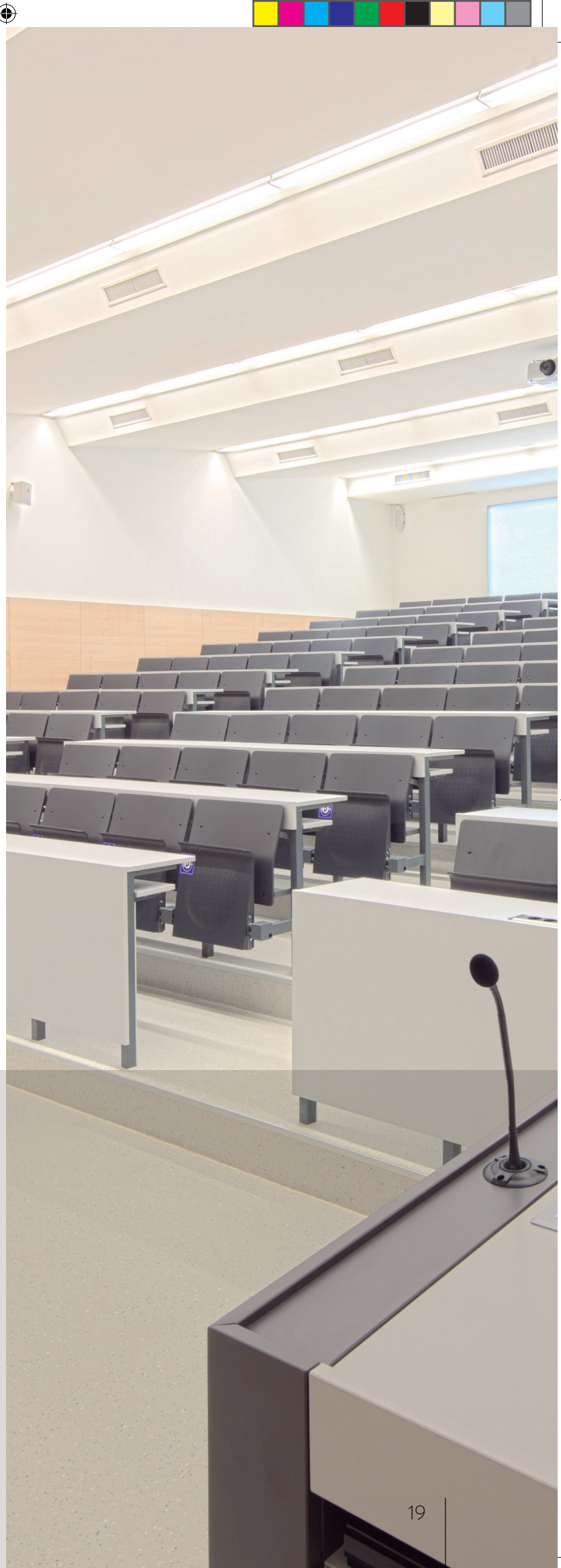
Trunking in anodised aluminium, giving high impact resistance and a good-looking finish.

SEPARATION OF ELECTRICAL AND VDM CIRCUITS



Meets Spanish RICT (Common Infrastructure and Telecommunications) regulations and the most demanding Standards and Directives.

Gives the option of configuring up to 4 compartments and joining to main or secondary trunking.





SOLUTIONS FOR UNDERFLOOR WIRING DISTRIBUTION

Trunking



Wiring protected with anodised aluminium for indoor environments

The underfloor wiring distribution system allows you to route electricity supply and VDM from any point in the room to work stations, offering maximum resistance to impacts, blows, being stepped on and other harmful actions.

- Offices
- Educational establishments
- Laboratories
- Libraries
- Museums
- Commercial premises

ELEGANT HIGH
RESISTANCE
MAXIMUM SECURITY

Made from aluminium to offer maximum durability. Fully closed and inaccessible to provide security in installation.

IK10

IMPACT RESISTANCE
RATING*

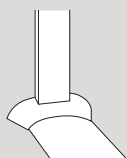
IP40

PROTECTION RATING

Floor trunking
Available in three sizes:
85 / 130 / 240 mm

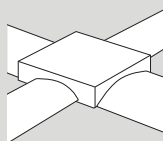


INTEGRATION INTO THE SYSTEM



Adaptation to 65x20 mm mini-trunking
and 70x50 mm K45 aluminium trunking

The junction accessory allows floor trunking
adaptation to wall trunking.



Distribution plinth

With various pre-punched holes for
entry of various floor trunking sizes.

*Accessories have an IK08 rating

Scudo|27

FINISH ▶

-030 White	-033 Aluminium	-063 Emery Grey	-124 Chrome	-096 Red	-102 Transparent	-108 Green
---------------	-------------------	--------------------	----------------	-------------	---------------------	---------------

FRAMES (compatible with all Series 27 functions)

REFERENCE	DESCRIPTION	REFERENCE	DESCRIPTION
2705610-030	Frame, 1 element, white	2705610-033	Frame, 1 element aluminium
2705620-030	Frame, 2 elements, white	2705620-033	Frame, 2 elements, aluminium
2705630-030	Frame, 3 elements, white		
			
2705610-063	Frame, 1 element, emery grey	2705610-124	Frame, 1 element, chrome
2705620-063	Frame, 2 elements, emery grey	2705620-124	Frame, 2 elements, chrome
2705630-063	Frame, 3 elements, emery grey	2705630-124	Frame, 3 elements, chrome

(*) All frames are supplied with an Allen key

BUTTONS (compatible with all Series 27 functions)

REFERENCE	DESCRIPTION
2705010 -030 -033 -063	Single button (suitable for switches, 2-way switches and pushbuttons)
2705011 -030 -033 -063	Single button with viewer for indicator lights
	
2705026 -030 -063	Dual button (suitable for switches, 2-way switches and pushbuttons)

COVERS (compatible with all Series 27 functions)

REFERENCE	DESCRIPTION
2705041 -030 -063	Cover for Schuko two pole socket bases with lateral ground



REFERENCE	DESCRIPTION
2705097 -030 -063	Cover for R-TV/SAT signal socket

2705097-030



REFERENCE	DESCRIPTION
2705062 -030 -063	Phone socket cover

2705062-030



REFERENCE	DESCRIPTION
2705091 -030 -033 -063	Hinged cover with universal lock for modular items from different Simon series

2705091-030



2705891 -039 Set of 2 keys for cover

REFERENCE	DESCRIPTION
2705092 -030 -033 -063	Hinged cover for modular items from different Simon series

2705092-030



REFERENCE	DESCRIPTION
2705036 -096 -102 -108	Cover for beacon

2705036-102



ACCESSORIES (compatible with all Series 27 functions)

REFERENCE	DESCRIPTION
2705088 -030 -063	Simon 27 Scudo series 27 adapter

2705088-030



REFERENCE	DESCRIPTION
2705950 -030	Seal for IP44 protection (linkable)

2705950-030

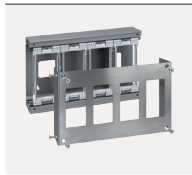


Cima|500 Metal housings

FINISH ▶ -036
Stainless steel

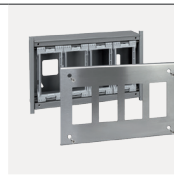
SURFACE-MOUNTED AND RECESSED BOXES

SURFACE-MOUNTED



REFERENCE	DESCRIPTION
51000011 -036	1 module
51000012 -036	2 modules
51000013 -036	3 modules
51000014 -036	4 modules
51000016 -036	6 modules

RECESSED



REFERENCE	DESCRIPTION
51000111 -036	1 module
51000112 -036	2 modules
51000113 -036	3 modules
51000114 -036	4 modules
51000116 -036	6 modules

ACCESSORIES ▼



51040013 -036	Protective cover with lock cylinder for 3-module surface-mounted and recessed boxes
51040014 -036	Protective cover with lock cylinder for 4-module surface-mounted and recessed boxes

SURFACE-MOUNTED 3-MODULE KITS



REFERENCE	DESCRIPTION
51001301 -036	2 double electrical sockets and 2 V&D jacks for 1 universal format RJ45 connector

RECESSED 3-MODULE KITS



REFERENCE	DESCRIPTION
51002301 -036	2 double electrical sockets and 2 V&D jacks for 1 universal format RJ45 connector



REFERENCE	DESCRIPTION
51001302 -036	1 double electrical socket, 1 double electrical socket for UPS and 2 V&D jacks for 1 universal format RJ45 connector



REFERENCE	DESCRIPTION
51002302 -036	1 double electrical socket, 1 double electrical socket for UPS and 2 V&D jacks for 1 universal format RJ45 connector

SURFACE-MOUNTED 4-MODULE KITS



REFERENCE	DESCRIPTION
51001401 -036	1 double electrical socket, 2 double electrical sockets for UPS and 2 V&D jacks for 2 universal format RJ45 connectors

RECESSED 4-MODULE KITS



REFERENCE	DESCRIPTION
51002401 -036	1 double electrical socket, 2 double electrical sockets for UPS and 2 V&D jacks for 2 universal format RJ45 connectors



FINISH ► **-036**
Stainless steel

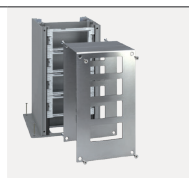
MINI-TOWERS

1-SIDED



REFERENCE	DESCRIPTION
52510212 -036	2 modules
52510213 -036	3 modules
52510214 -036	4 modules
52510215 -036	5 modules

2-SIDED



REFERENCE	DESCRIPTION
52510222 -036	2 modules
52510223 -036	3 modules
52510224 -036	4 modules

ACCESSORIES ▼



52513214 -036 Protective cover with lock cylinder for 4-module Mini-tower

3-MODULE KITS



REFERENCE	DESCRIPTION
52516301 -036	2 double electrical sockets and 2 V&D jacks for 1 universal format RJ45 connector



REFERENCE	DESCRIPTION
52516302 -036	1 double electrical socket, 1 double electrical socket for UPS and 2 V&D jacks for 1 universal format RJ45 connector

4-MODULE KITS



REFERENCE	DESCRIPTION
52516401 -036	1 double electrical socket, 2 double electrical socket for UPS and 2 V&D jacks for 2 universal format RJ45 connectors



Waterproof box | K45

FINISH ▶

/71
Brass

/72
Stainless steel

MECHANISM-HOLDERS

WITH SECURITY LOCK



REFERENCE		DESCRIPTION
KSE15USEC/23	/71 /72	With 1 K45 socket and 1 RJ45 connector, Cat. 5e UTP
KSE1SEC/23	/71 /72	With 1 K45 socket
KSE0SEC/23	/71 /72	For 1 K45 mechanism

WITH MANUAL LOCK



REFERENCE		DESCRIPTION
KSE16U/23	/71 /72	With 1 K45 socket and 1 RJ45 connector, Cat. 6 UTP
KSE15U/23	/71 /72	With 1 K45 socket and 1 RJ45 connector, Cat. 5e UTP
KSE1/23	/71 /72	With 1 K45 socket
KSE0/23	/71 /72	For 1 K45 mechanism

TRAYS

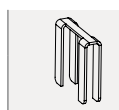


REFERENCE	DESCRIPTION
KGE170TF/23	Raised floors



REFERENCE	DESCRIPTION
KGE170/23	Concrete floor

ACCESSORIES ▼



ACSE Accessory for connection between two waterproof floor boxes for concrete floor

Aqua|44

FINISH ▶

-033 Aluminium	-035 Grey	-037 Red	-065 Pistachio	-096 Translucent red	-096 Translucent green	-138 Transparent
-------------------	--------------	-------------	-------------------	-------------------------	---------------------------	---------------------

MONOBLOCK



REFERENCE	DESCRIPTION
4490201-035	Grey 2-way switch, 10 AX 250 V IP 55
4490204-035	Grey 2-way switch, 10 AX 250 V, with indicator light, IP 55



REFERENCE	DESCRIPTION
4490150-035	Grey pushbutton, 10 AX 250 V IP 55
4490160-035	Grey pushbutton, 10 AX 250 V, with indicator light, IP 55



REFERENCE	DESCRIPTION
4490432-035	Grey two pole Schuko socket base with lateral ground, 10/16 A 250 V dc, fast term. conn.



REFERENCE	DESCRIPTION
4490433-035	Grey pre-wired two pole double Schuko socket base with lateral ground, 10/16 A 250 V dc, fast term. conn.

SURFACE-MOUNTED SOCKETS AND FRAMES for Simon 27 mechanisms, IP 55



REFERENCE	DESCRIPTION
4490781-035	Empty box, grey, IP 55, with single button, 75x84x58 mm



REFERENCE	DESCRIPTION
4490782-035	Empty box, grey, IP 55, with dual button, 75x84x58 mm



REFERENCE	DESCRIPTION
4490783-035	Empty box, grey, IP 55, with cover, 75x84x58 mm



REFERENCE	DESCRIPTION
4490780-035	Empty box, grey, IP 40, 75 x 84 x 56 mm

FRAME/COVER SET FOR SURFACE-MOUNTING OR RECESSING, IP 55



REFERENCE	DESCRIPTION
4400010-035	Frame with single button, grey, Simon 44 Aqua



4400010 -033 -037 -065	Optional single button with viewer
-------------------------------	------------------------------------



REFERENCE	DESCRIPTION
4400026-035	Frame with dual button, grey, Simon 44 Aqua



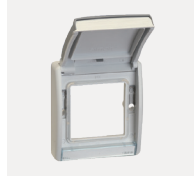
4400026 -033 -037 -065	Optional button with dual viewer
-------------------------------	----------------------------------



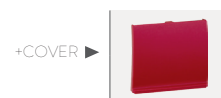
REFERENCE	DESCRIPTION
4400036-102	Frame with cover, neutral, translucent, for beacon 75370-39



4400092 -096 -108	Optional translucent cover
--------------------------	----------------------------



REFERENCE	DESCRIPTION
4400092-035	Frame with hinged cover, grey, Simon 44 Aqua



4400092 -033 -037 -065 -138*	Optional cover * Transparent label holder function.
-------------------------------------	---





REFERENCE	DESCRIPTION
4400088-035	Frame without cover

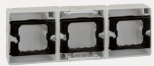
IP55 SURFACE-MOUNTED SOCKETS



REFERENCE	DESCRIPTION
4400751-035	Frame with single button, grey, Simon 44 Aqua



REFERENCE	DESCRIPTION
4400761-035	Surface-mounted socket, 2 horizontal elements, 152x84x33 mm
4400763-035	Waterproof socket box, grey, 2 vertical elements, 170x75x33 mm

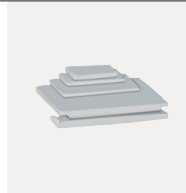


REFERENCE	DESCRIPTION
4400765-035	Surface-mounted socket, 3 horizontal elements, 236x84x33 mm

ACCESSORIES



REFERENCE	DESCRIPTION
4400970-039	Clamps for recessing surface-mounted box



REFERENCE	DESCRIPTION
4400995-035	Adapter for channel (grey)

RECESSED IP 55 FRAMES



REFERENCE	DESCRIPTION
4400610-035	Frame, 1 element, for recessing, IP 55
4400620-035	Frame, 2 elements, horizontal, for recessing, IP 55
4400630-035	Frame, 3 elements, horizontal, for recessing, IP 55



Trunking

FINISH ▶ /8
Anodised Aluminium /24
Light grey, Ral 7035

WALL TRUNKING

ALUMINIUM MINI-TRUNKING WITH 65 mm COVER



REFERENCE	DESCRIPTION
TM21042/8	65 x 20 mm Aluminium Mini-Trunking, 2 Compartments, Anodised Aluminium
TM21061/8	65 x 40 mm aluminium mini-trunking, 1 compartment, anodised aluminium

ACCESSORIES ▼



TMA201106/8 Plane angle, 90°, 65 x 40 mm



TMA202104/8 External angle, 90°, 65 x 20 mm
TMA202406/24 External angle, 90°, 65 x 40 mm



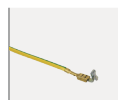
TMA203104/8 Internal angle, 90°, 65 x 20 mm
TMA203406/24 Internal angle, 90° 65 x 40 mm



TMA204404/8 End cover, 65 x 20 mm
TMA204106/8 End cover, 65 x 40 mm



TKA903 Hardware connecting pin



TKA904 Faston cable connector for ground connection, 120 mm



TMA07/8 65 x 120 mm aluminium plate for electrobanda French socket

TMA08/8 65 x 120 mm aluminium plate for electrobanda Schuko socket

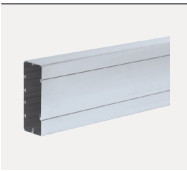


FINISH ▶

/8
Anodised Aluminium/9
Snow white, Ral 9010/14
Graphite grey, Ral 7021

ALUMINIUM TRUNKING CABLE GLAND

ALUMINIUM TRUNKING FOR UNIVERSAL MECHANISMS



REFERENCE	DESCRIPTION
TS9055/8	Aluminium trunking cable gland, 90x55 mm
TS13055/8	Aluminium trunking cable gland, 130x55 mm

ACCESSORIES ▼



TKA101208/8	Plane angle, 90 x 55 mm
TKA1305505/8	Plane angle, 130 x 55 mm



TKA102208/8	Variable external angle, 90 x 55 mm
TKA1305506/8	Variable external angle, 130 x 55 mm



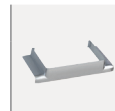
TKA103208/8	Variable internal angle, 90 x 55 mm
TKA1305507/8	Variable internal angle, 130 x 55 mm



TKA905502/8	End cover, 90 x 55 mm
TKA1305502/8	End cover, 130 x 55 mm



TKA105208/8	Joint sealer, 90 x 55 mm
TKA1305508/8	Joint sealer, 130 x 55 mm



TKA106208/8	T-junction to trunking, 90 x 55 mm
TKA106210/8	T-junction to trunking, 130 x 55 mm



TKA108	Plane angle radius of curvature
TKA109	External angle radius of curvature



TKA108	Plane angle radius of curvature
TKA109	External angle radius of curvature



TSA001	Internal separator, 55 mm, 1 m segment
---------------	--



TSA002	Cable gland connection profile
---------------	--------------------------------



TKA904	Cable with Faston connector for ground connection, 120 mm
---------------	---



TSA007	Linkable adapter for universal mechanisms
---------------	---



TSA008	Adapter for Schuko, Cima format and mech. protection
---------------	--



SAL100	Trim frame and centre frame
---------------	-----------------------------

/8 /9 /14

FINISH ▶ **/8**
Anodised Aluminium

K45 CABLOMAX ALUMINIUM

FOR DIRECT SNAP-FIT K45 MECHANISMS



REFERENCE	DESCRIPTION
TK01103/8	Aluminium cablomag trunking, 130x55 mm K45
TK01133/8	Aluminium cablomag trunking, 170x55 mm K45
TK01163/8	Aluminium cablomag trunking, 210x55 mm K45

ACCESSORIES ▼



TKA011110/8	Plane angle, 130x55 mm, ascending
TKA011113/8	Plane angle, 170x55 mm, ascending
TKA011216/8	Plane angle, 210x55 mm, ascending



TKA021110/8	Plane angle, 130x55 mm, descending
TKA021113/8	Plane angle, 170x55 mm, descending
TKA021216/8	Plane angle, 210x55 mm, descending



TKA002210/8	Variable external angle, 130x55 mm
TKA002213/8	Variable external angle, 170x55 mm
TKA002216/8	Variable external angle, 210x55 mm



TKA003210/8	Variable internal angle, 130x55 mm
TKA003213/8	Variable internal angle, 170x55 mm
TKA003216/8	Variable internal angle, 210x55 mm



TKA004210/8	End cover, 130x55 mm
TKA004213/8	End cover, 170x55 mm
TKA004216/8	End cover, 210x55 mm



TKA005210/8	Joint sealer, 130x55 mm
TKA005213/8	Joint sealer, 170x55 mm
TKA005216/8	Joint sealer, 210x55 mm



TKA0061/8	T Junction
------------------	------------



RTT002/8	Front cover for aluminium trunking, 2 m
-----------------	---



K45 ALUMINIUM TRUNKING

FOR DIRECT SNAP-FIT K45 MECHANISMS



REFERENCE	DESCRIPTION
TK11081/8	K45 aluminium trunking, 90x55 mm, 1 compartment
TK11102/8	K45 aluminium trunking, 130x55 mm, 2 compartments
TK11122/8	K45 aluminium trunking, 160x55 mm, 2 compartments
TK11143/8	K45 aluminium trunking, 185x55 mm, 3 compartments

ACCESSORIES ▼



TKA101208/8	Plane angle, 90x55 mm
TKA1305505/8	Plane angle, 130x55 mm
TKA101212/8	Plane angle, 160x55 mm
TKA101214/8	Plane angle, 185x55 mm



TKA102208/8	Variable external angle, 90x55 mm
TKA1305506/8	Variable external angle, 130x55 mm
TKA1605506/8	Variable external angle of 160x55 mm
TKA1855506/8	Variable external angle, 185x55 mm



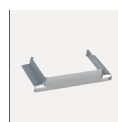
TKA103208/8	Variable internal angle, 90x55 mm
TKA1305507/8	Variable internal angle, 130x55 mm
TKA1605507/8	Variable internal angle of 160x55 mm
TKA1855507/8	Variable internal angle, 185x55 mm



TKA905502/8	End cover, 90x55 mm
TKA1305502/8	End cover, 130x55 mm
TKA1605502/8	End cover, 160x55 mm
TKA1855502/8	End cover, 185x55 mm



TKA105208/8	Joint sealer, 90x55 mm
TKA1305508/8	Joint sealer, 130x55 mm
TKA105212/8	Joint sealer, 160x55 mm
TKA105214/8	Joint sealer, 185x55 mm



TKA106208/8	T-junction to trunking, 90x55 mm
TKA106210/8	T-junction to trunking, 130x55 mm
TKA106212/8	T junction to trunking, 160x55 mm















TKA108	Plane angle radius of curvature
---------------	---------------------------------







TKA109	External angle radius of curvature
---------------	------------------------------------

K45 ALUMINIUM TRUNKING, 1 COMPARTMENT

REFERENCE	DESCRIPTION
 TK11071/8	K45 aluminium trunking, 70 x 50 mm, 1 compartment, anodised aluminium Does not allow for mounting of K11/..., K22/..., KS11/..., KS22/... multi-sockets
ACCESSORIES ▼	
 TKA101307/8	Universal accessory (plane angle and junction)
 TKA102307/8	Fixed external angle
 TKA103307/8	Fixed internal angle
 TKA104307/8	End cover (stainless steel)
 TKA104207/2	End cover (ABS, grey finish)
 TKA105307/8	Joint sealer
 RTT001/8	K45 aluminium trunking cover, 2 m
 RTP002/8	K45 aluminium trunking profile, 70 x 55 mm
 TKA902	PVC separator, 1000 x 45 mm, 1 m segment
 TKA903	Hardware connecting pin, 1 off Joins hardware segments and helps to level and improve finish
 TKA904	Cable with Faston connector for ground connection, 120 mm For connecting hardware to ground

INSTALLATION ACCESSORIES

REFERENCE	DESCRIPTION	REFERENCE	DESCRIPTION
 K11/..	K45 electrical socket, fast-terminal connection, with protective shutter	 K106A/..	K45 jack with MCB, 10 A
 KB95U	K45 flat V&D jack with dust cover, with 2 connectors, Cat. 5e UTP	 K100B/..	K45 jack, 1 mechanism with 1 VGA HD15 female connector, screw connection

SURFACE-MOUNTED CABLE DISTRIBUTION (DCS) SYSTEM

ALUMINIUM TRUNKING FOR INDOOR CONCRETE FLOORING

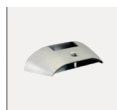


REFERENCE	DESCRIPTION
TF11172/8	DCS trunking + cover, aluminium, for floor, 85 x 18 mm, 2 m long
TF21172/8	DCS monoblock trunking, aluminium, for floor, 85 x 18 mm, 2.75 m long
TF11183/8	DCS trunking + cover, aluminium, for floor, 130 x 18 mm, 2 m long
TF21183/8	DCS monoblock trunking, aluminium, for floor, 130 x 18 mm, 2.75 m long
TF11193/8	DCS trunking + cover, aluminium, for floor, 240 x 34 mm, 2 m long

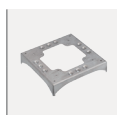
ACCESSORIES ▼



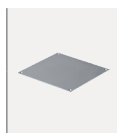
TFA904417/8	Metal end cover, 85 x 18 mm
TFA904418/8	Metal end cover, 130 x 18 mm
TFA904419/8	Metal end cover, 240 x 34 mm



TFA965417/8	Junction from 85 x 18 mm DCS to 65 x 20 mm perimeter aluminium trunking
TFA965418/8	Junction from 130 x 18 mm DCS to 65 x 20 mm perimeter aluminium trunking
TFA970418/8	Junction from 130 x 18 mm DCS to 70 x 50 mm perimeter aluminium trunking



KTA804/8	K45 metal plinth with 4 pre-punched holes For DCS trunking of 85 x 18 mm
KTA813/8	K45 plinth for 1 off 130 x 18 mm punched hole & 3 off 85 x 18 mm pre-punched holes
KTA822/8	K45 plinth for 2 off 130 x 18 mm punched holes at 180° & 2 off 85 x 18 mm pre-punched holes
KTA8229/8	K45 plinth for 2 off 130 x 18 mm punched holes at 90° & 2 off 85 x 18 mm pre-punched holes
KTA831/8	K45 plinth for 3 off 130 x 18 mm punched holes & 1 off 85 x 18 mm pre-punched hole



KTA904/8 Top cover for K45 distribution plinth



ALKA02/8 Auxiliary plinth cover for K45 mini-column adapter



simon

www.simon.es

Barcelona · Belo Horizonte · Buenos Aires · Casablanca
Hanoi · Istanbul · Kiev · Lima · Lisbon · Madrid · Mexico City
Moscow · New Delhi · Sao Paulo · Shanghai · Turin · Warsaw

SIMON, S.A

Diputación, 390-392
08013 Barcelona, Spain
Tel. +34 933 440 800
Fax +34 932 461 002
export@simon.es

Customer Service

Tel. +34 902 109 700
Fax +34 933 440 807
info@simon.es

Projects Department

Tel. +34 902 109 700
Fax +34 933 440 806
proyectos@simon.es

Showroom open to the public

Diputación, 390-392
08013 Barcelona, Spain
Tel. +34 902 109 700

Sales Management

Tel. +34 902 444 469
Fax +34 902 627 899

205380